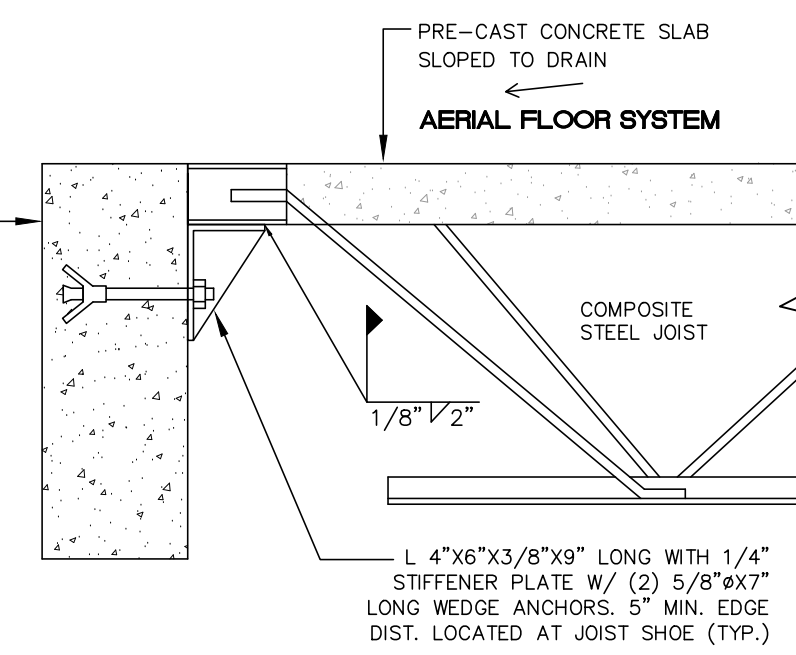
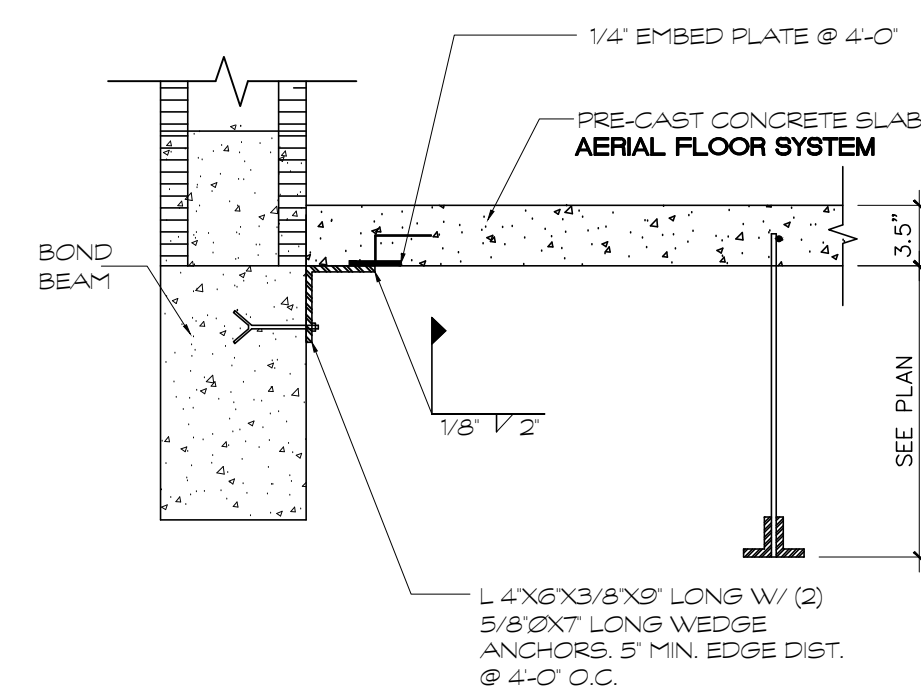


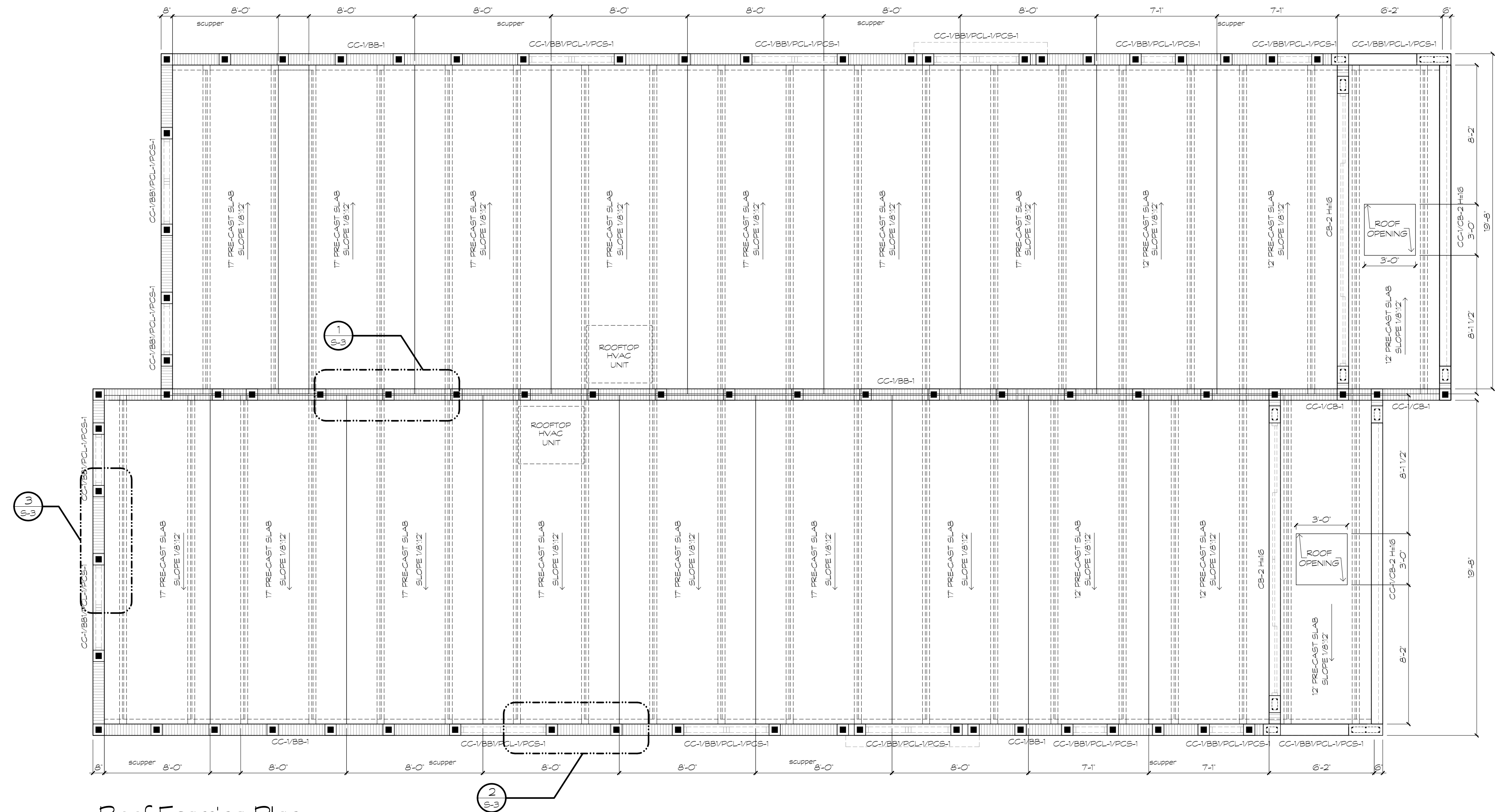
1 JOIST PERPENDICULAR TO BOND BEAM @ ROOF
S-3 SCALE N.T.S.



2 JOIST PERPENDICULAR TO BOND BEAM
S-3 SCALE N.T.S.



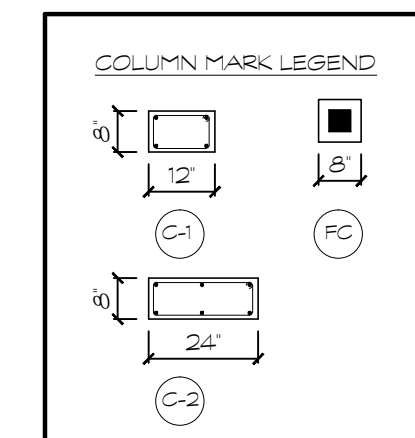
3 JOIST PARALLEL TO BOND BEAM
S-3 SCALE N.T.S.



Roof Framing Plan

Scale 1/4" = 1'-0"

COLUMN SCHEDULE					
MARK	TYPE	MIN. SIZE W x D	VERTICAL REINF. / T.S. TOP PLATE	HOOP SPACING / T.S. BASE PL.	REMARKS
C-1	CONC.	8 x 12	4-#5	#3 @ 12 O.C.	---
FC	FILLED CELL	8 x 8	1-#5	---	GROUT FILLED C. BLK. CELL



BEAM SCHEDULE (SEE EXTERIOR BUILDING ELEVATIONS FOR CONCRETE BEAM ELEVATIONS)												
MARK	MIN. SIZE (WxD)	T.O.B. ELEV.	REINFORCING STEEL							STIRRUPS FROM EACH COLUMN FACE		REMARKS
			BOT. CONT.	B	TOP CONT.	C	MD. CONT.	D	E	SIZE / TYPE	NUMBER & SPACING	
BB-1	8x16	---	1-#5	---	1-#5	---	---	---	---	---	---	Bond-Beam
CC-1	8x8	---	1-#5	---	---	---	---	---	---	---	---	Concrete-Coping
CB-1	8x26	---	2-#5	---	2-#5	---	---	---	#3 / O	CONT. @ 8"	---	Concrete-Beam
CB-2	8x16	---	3-#5	---	2-#5	---	---	---	#3 / O	CONT. @ 5"	---	Concrete-Beam
CB-3	16x8	---	2-#5	---	2-#5	---	---	---	#3 / O	CONT. @ 5"	---	Concrete-Beam
PCS-1	8x8	---	1-#5	---	---	---	---	---	---	---	---	Pre-cast-Concrete-Sill
PCL-1	8x8	---	1-#5	---	---	---	---	---	---	---	---	Pre-cast-Concrete-Lintel

- NOTE: UNLESS OTHERWISE SHOWN ON PLANS, DROP BOTTOM OF BEAM @ WINDOWS & DOORS AS REQUIRED. PROVIDE 2 #5 R-BAR FOR EACH 6' OF DROP & #3 TIES @ 24" o/c EXTENDING TO TOP OF BEAM REINFORCING.
- THE CONTRACTOR SHALL VERIFY REQUIRED MASONRY OPENING HEADER HEIGHTS PRIOR TO CONSTRUCTION. ANY CONFLICTS WITH HEADER BEAM SIZE SHALL BE REPORTED TO ARCHITECT/ENGINEER.
- ENGINEERED AND APPROVED PRECAST CONCRETE LINTEL BEAMS MAY BE USED IN LIEU OF POURED AND REINFORCED CONCRETE HEADER BEAMS (SUBMIT SHOP DRAWINGS FOR APPROVAL)