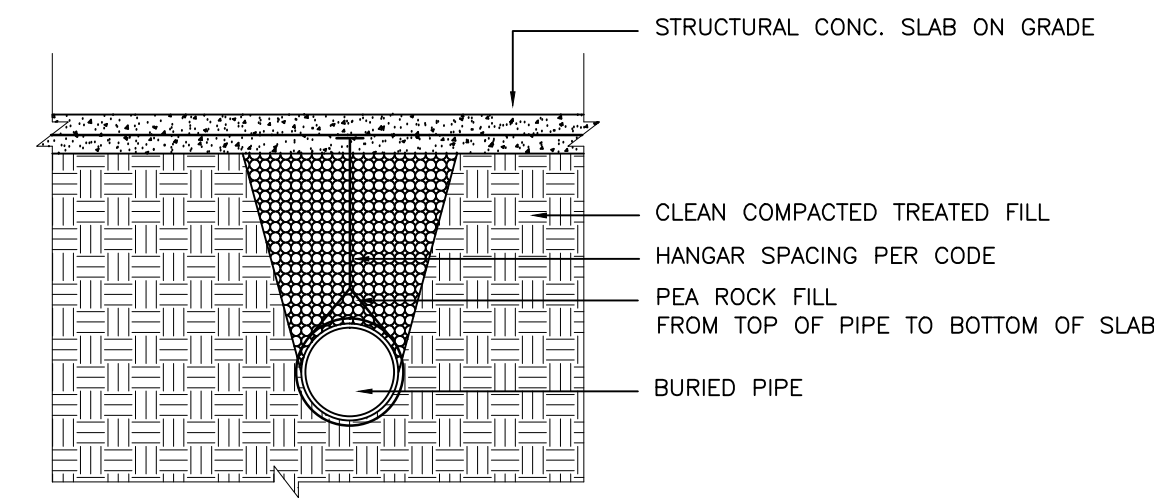


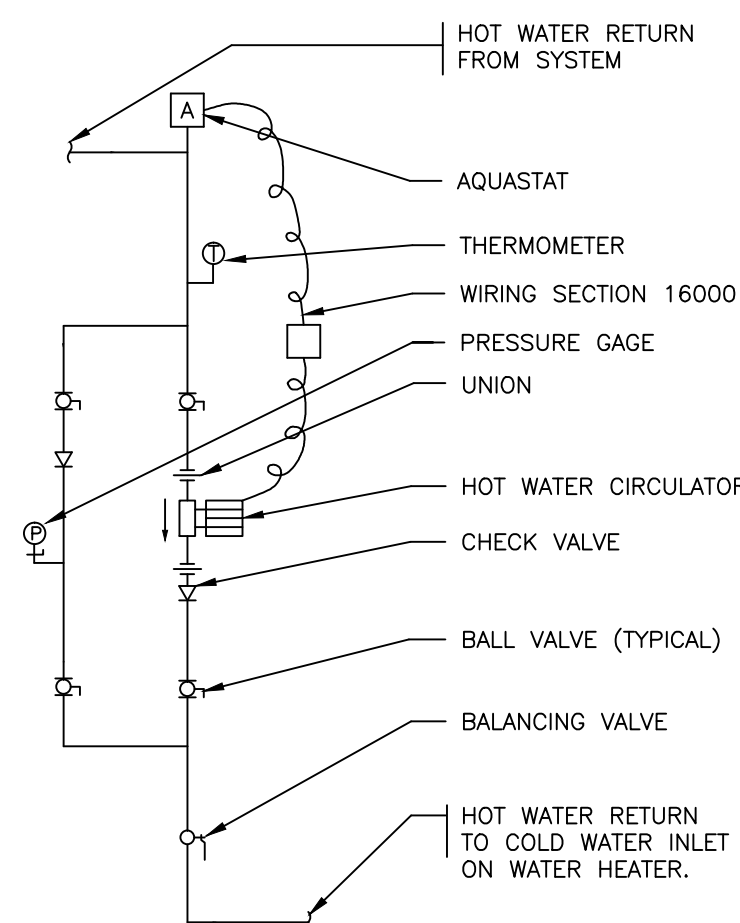
**PLUMBING NOTES:**

1. A. All work shall be performed in accordance with the Florida Building Code 2010 Edition.
- B. Drawings: Refer to all drawings for coordination of the plumbing work.
- C. Arrange and pay for all permits, licenses, inspections and tests. Obtain the required certificates and present to owner.
- D. Guarantee: The completed installation shall be fully guaranteed against defective materials and/or improper workmanship for a minimum of one year for material and labor.
- E. All horizontal sanitary piping shall slope at 1/8 inch per foot minimum for 3" and larger and at 1/4" slope for 2" pipes and smaller.
2. Shop drawings: Contractor shall submit for approval all specified items. No work shall proceed without the approval of these submittals.
3. Plumbing fixtures: Fixtures shall be complete with drains, traps, supplies and any other accessory required.
4. Materials:
  - A. Piping:
    - a. Soil, waste and vent: Sanitary pipe, PVC, DWV, Schedule 40. Foam Core will not be acceptable for underground piping.
    - b. Domestic water piping: CPVC pipe and fittings. Isolate piping from concrete with insulating material.
    - c. Condensate drain: DWV PVC.
    - d. Domestic water supply assembly: Chrome finish tubing with angle shut off valves.
    - e. Insulation: Insulate all hot water lines with 1" thick fiberglass insulation, with self sealing jacket. Insulate condensate piping with 1/2" elastomeric insulation.
5. All water heaters shall meet the standards of the latest energy efficiency code.
6. Piping testing and cleaning:
  - A. Test: All sanitary and domestic water supply piping shall be tested for leaks before piping is concealed or connected to equipment and plumbing fixtures.
  - B. Disinfection: All domestic water piping shall be disinfected by introducing a solution of calcium hypochlorite of 50 parts per million of chloride and as per AWWA Standards.
7. Valves: Domestic water valves shall be of bronze body, sweat ends.
8. All exterior clean outs shall be terminated up to grade and shall be marked.
9. Contractor shall coordinate exact location of sanitary, and domestic water piping before starting any work. Notify Architect/Engineer of any deviations from design drawings.



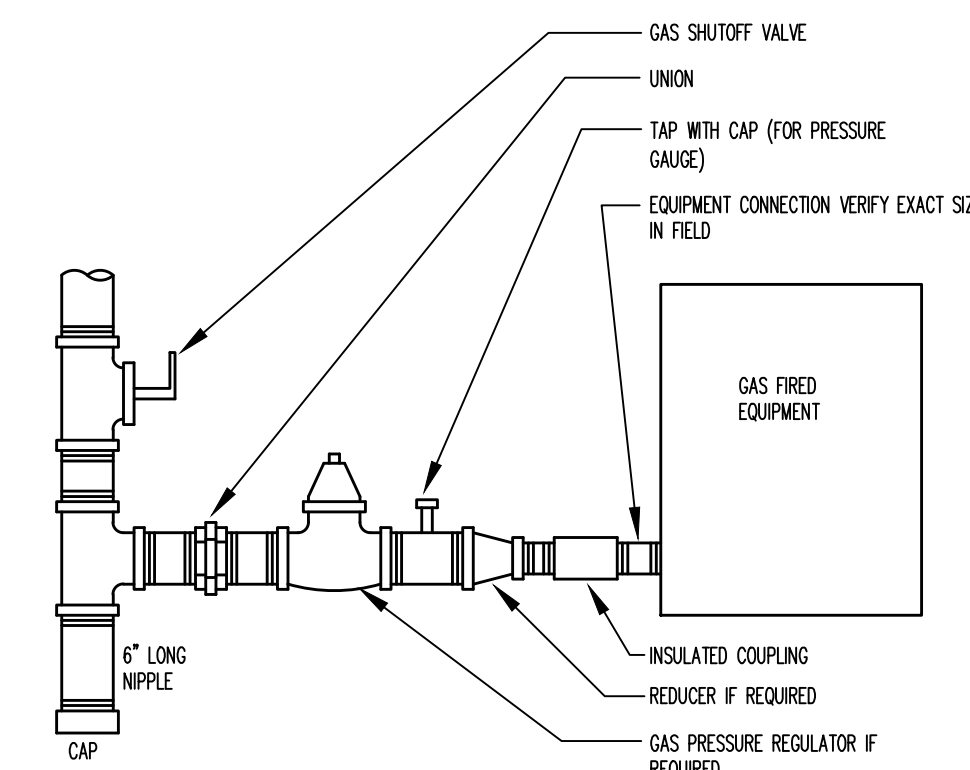
NOTE: PIPE HANGERS SHALL BE EQUIVALENT TO GLOBE SERIES 402 PVC COATED STAINLESS STEEL

**BURIED PIPE DETAIL**



PUMP SCHEDULE						
I.D.	MANUFACTURER	MODEL	GPM	FEET OF HEAD	HP	REMARKS
HWRP-1	TACO	006	3	7	1/35	120/1/60

**HOT WATER RECIRCULATING PUMP DETAIL**



**GAS EQUIPMENT CONNECTION DETAIL**

**PLUMBING SYMBOL LEGEND**

SYMBOL	DESCRIPTION
—————	SANITARY LINE
—————	VENT LINE
— CD —	CONDENSATE LINE
—————	COLD WATER LINE
—————	HOT WATER LINE
—————	HOT WATER RETURN LINE
FCO	FLUSH CLEAN OUT
FD	FLOOR DRAIN
CO	CLEAN OUT
VTR	VENT THRU ROOF

FIXTURE	WATER PIPE SIZE	NOMINAL TRAP SIZE	MAXIMUM FLOW RATES
WATER CLOSET (TANK)	1/2"	3"	1.28 GPF
SINK	1/2"	1 1/2"	1.5 GPM
LAVATORY	1/2"	1 1/2"	1.5 GPM
TUB	1/2"	1 1/2"	1.5 GPM
SHOWER	1/2"	1 1/2"	1.5 GPM @ 80 psi

1. MAXIMUM WATER CONSUMPTION IN ACCORDANCE WITH FBC 604.4/P2903.2.
2. INDIVIDUAL SHOWER AND TUB/SHOWER COMBINATION CONTROL VALVES SHALL BE ANTI-SCALD TYPE IN ACCORDANCE WITH FBC P2701 AND ASSE 1016.