

window schedule

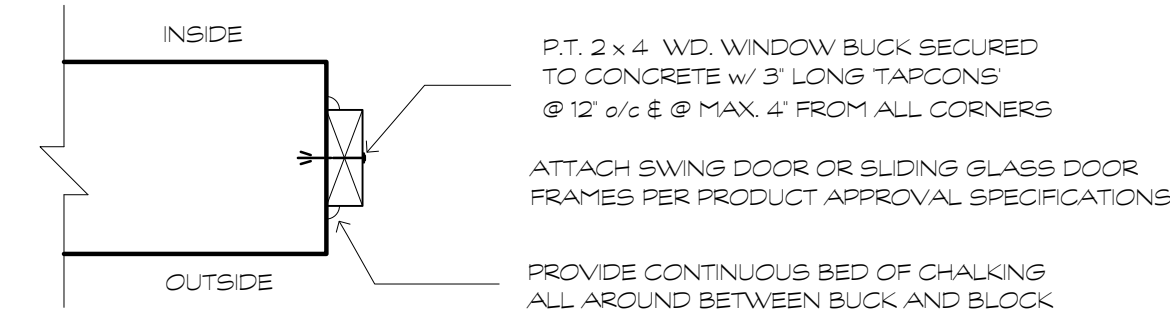
mark	r.o. (verify)		type	frame	screen	design load +/-	remarks
	w	h					
A	44	96	FX TEMP GL	ALUM.	NO	+57.53 / -62.68	FRONT DOOR SIDELITE (SEE ELEVATION)
B	24	24	FX TEMP GL	ALUM.	YES	+61.78 / -66.93	
C	24	24	FX TEMP GL	ALUM.	YES	+61.78 / -66.93	
D	24	24	FX TEMP GL	ALUM.	YES	+61.78 / -66.93	
E	24	24	FX TEMP GL	ALUM.	YES	+61.78 / -66.93	
F	44	96	FX TEMP GL	ALUM.	NO	+57.53 / -62.68	FRONT DOOR SIDELITE (SEE ELEVATION)
G	60	60	HORIZ. ROLLER	ALUM.	YES	+58.16 / -63.31	
H	60	60	HORIZ. ROLLER	ALUM.	YES	+58.16 / -63.31	
I	60	60	HORIZ. ROLLER	ALUM.	YES	+58.16 / -63.31	
J	24	60	FX TEMP GL	ALUM.	YES	+61.78 / -66.93	
K	24	60	FX TEMP GL	ALUM.	YES	+61.78 / -66.93	
L	24	60	FX TEMP GL	ALUM.	YES	+61.78 / -66.93	
M	24	60	FX TEMP GL	ALUM.	YES	+58.16 / -63.31	
N	60	60	HORIZ. ROLLER	ALUM.	YES	+58.16 / -63.31	
O	60	60	FX TEMP GL	ALUM.	NO	+58.16 / -63.31	
P	60	60	HORIZ. ROLLER	ALUM.	YES	+58.16 / -63.31	☆ EGRESS
Q	60	60	HORIZ. ROLLER	ALUM.	YES	+58.16 / -63.31	☆ EGRESS
R	36	36	CASEMENT	ALUM.	YES	+61.78 / -66.93	
S	36	36	CASEMENT	ALUM.	YES	+61.78 / -66.93	
T	60	60	HORIZ. ROLLER	ALUM.	YES	+58.16 / -63.31	☆ EGRESS
U	60	60	HORIZ. ROLLER	ALUM.	YES	+58.16 / -63.31	☆ EGRESS
V	60	60	FX TEMP GL	ALUM.	NO	+58.16 / -63.31	

NOTE: ALL GLAZING SHALL BE IMPACT RESISTANT w/ ANODIZED ALUMINUM FRAMES
 NOTE: ALL GLAZING TO BE TINTED UNLESS OTHERWISE NOTED.
 NOTE: WINDOW & DOOR SUPPLIER TO VERIFY ALL MASONRY OPENINGS PRIOR TO START OF CONSTRUCTION
 NOTE: EVERY HABITABLE ROOM SHALL BE PROVIDED WITH WINDOWS OR DOORS AFFORDING ADEQUATE LIGHT AND VENTILATION PER F.B.C. / RESIDENTIAL SEC. R-303.1 (LIGHT @ 8% OF FLOOR AREA AND VENTILATION @ 1/2 OF REQUIRED LIGHT)
 NOTE: EVERY SLEEPING ROOM AND EVERY LIVING AREA SHALL HAVE NOT LESS THAN ONE PRIMARY MEANS OF ESCAPE AND ONE SECONDARY MEANS OF ESCAPE PER NFPA 101 / SEC. 24.2.2
 NOTE: EACH GLASS PANE SHALL BEAR THE MANUFACTURERS LABEL DESIGNATING TYPE, THICKNESS AND ENERGY PERFORMANCE RATINGS PER FBC 2403. SUCH LABEL SHALL REMAIN AFFIXED UNTIL THE CERTIFICATE OF OCCUPANCY HAS BEEN ISSUED.
 ☆ Egress
 NOTE: INDICATES LOCATION OF ESCAPE AND RESCUE OPENING PER F.B.C. / RESIDENTIAL SEC R310 WITH A MIN. NET CLEAR OPENING OF 5.7 SQ. FT. AND A MIN. CLEAR WIDTH OF 20" AND A MIN. CLEAR HEIGHT 24" AND MAX. SILL HEIGHT OF 44"
 NOTE: ALL INTERIOR DOORS TO BE 2- PANEL BIRCH, PAINTED
 NOTE: ALL DOOR HARDWARE TO BE APPROVED BY OWNER PRIOR TO ORDERING AND INSTALLATION.

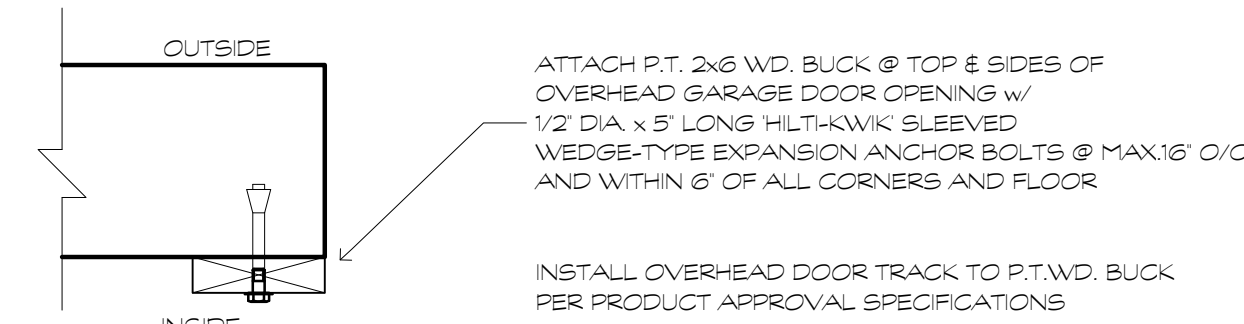
door schedule

mark	size			type	matl	frame	r.o. - in.	design load +/-	remarks
	w	h	thk						
1	3-0	8-0	---	SWING	MTL/GL	MTL	84x98	+54.9 / -60.04	IMPACT-RESISTANT W/ GL SIDELITE (SEE ELEVATION)
2	18-0	8-0	---	OV HEAD	MTL	---	192x98	+51.7 / -62.24	ROLL-UP GARAGE DOOR w/ BATTERY BACK-UP
3	18-0	8-0	---	OV HEAD	MTL	---	196x98	+51.7 / -62.24	ROLL-UP GARAGE DOOR w/ BATTERY BACK-UP
4	3-0	8-0	---	SWING	MTL/GL	MTL	84x98	+54.9 / -60.04	IMPACT-RESISTANT W/ GL SIDELITE (SEE ELEVATION)
5	18-0	8-0	---	SL.G.LDR	MTL / GL	MTL	192x98	+51.63 / -62.08	IMPACT-RESISTANT, FIXED SIDE PANELS
6	18-0	8-0	---	SL.G.LDR	MTL / GL	MTL	192x98	+51.63 / -62.08	IMPACT-RESISTANT, FIXED SIDE PANELS
7	3-0	8-0	1-3/4	SWING	WD	WD	-	-	interior
8	2-8	8-0	1-3/4	SWING	WD	WD	-	-	interior
9	2-0	6-8	1-3/4	SWING	WD	WD	-	-	interior
10	3-0	8-0	1-3/4	SWING	WD	WD	-	-	interior
11	2-8	8-0	1-3/4	SWING	WD	WD	-	-	interior
12	2-0	6-8	1-3/4	SWING	WD	WD	-	-	interior
13	2-8	8-0	1-3/4	SWING	WD	WD	-	-	interior
14	2-2	8-0	1-3/4	POCKET	WD	WD	-	-	interior
15	2-2	8-0	1-3/4	POCKET	WD	WD	-	-	interior
16	2x1-6	8-0	1-3/4	SWING	WD	WD	-	-	interior
17	2-6	8-0	1-3/4	SWING	WD	WD	-	-	interior
18	2-0	8-0	1-3/4	SWING	WD	WD	-	-	interior
19	2-8	8-0	1-3/4	SWING	WD	WD	-	-	interior
20	2-6	8-0	1-3/4	SWING	WD	WD	-	-	interior
21	2-6	8-0	1-3/4	POCKET	WD	WD	-	-	interior
22	2-8	8-0	1-3/4	SWING	WD	WD	-	-	interior
23	2-2	8-0	1-3/4	SWING	WD	WD	-	-	interior
24	2-2	8-0	1-3/4	SWING	WD	WD	-	-	interior
25	2-8	8-0	1-3/4	SWING	WD	WD	-	-	interior
26	2-6	8-0	1-3/4	SWING	WD	WD	-	-	interior
27	2-2	8-0	1-3/4	POCKET	WD	WD	-	-	interior
28	2-2	8-0	1-3/4	POCKET	WD	WD	-	-	interior
29	2x1-6	8-0	1-3/4	SWING	WD	WD	-	-	interior
30	2-8	8-0	1-3/4	SWING	WD	WD	-	-	interior
31	2-0	8-0	1-3/4	SWING	WD	WD	-	-	interior
32	2-8	8-0	1-3/4	SWING	WD	WD	-	-	interior
33	2-8	8-0	1-3/4	SWING	WD	WD	-	-	interior
34	2-8	8-0	1-3/4	POCKET	WD	WD	-	-	interior
35	2-6	8-0	1-3/4	SWING	WD	WD	-	-	interior
36	2-2	8-0	1-3/4	SWING	WD	WD	-	-	interior
37	2-2	8-0	1-3/4	SWING	WD	WD	-	-	interior
38	2-6	8-0	1-3/4	SWING	WD	WD	-	-	interior
39	18-0	8-0	---	SL.G.LDR	MTL / GL	MTL	192x98	+51.63 / -62.08	IMPACT-RESISTANT, FIXED SIDE PANELS
40	18-0	8-0	---	SL.G.LDR	MTL / GL	MTL	192x98	+51.63 / -62.08	IMPACT-RESISTANT, FIXED SIDE PANELS

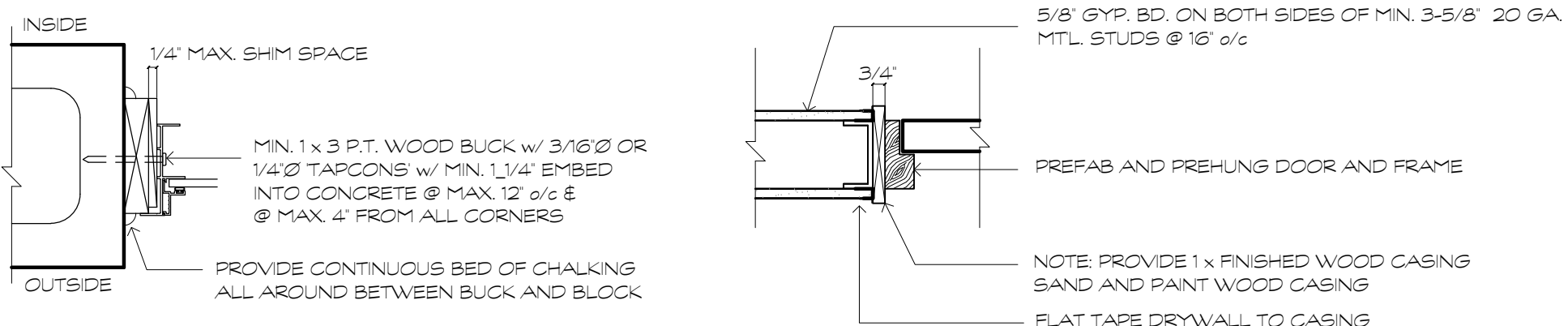
NOTE: ALL INTERIOR DOORS TO BE 2- PANEL BIRCH, PAINTED
 NOTE: ALL GLAZING IN DOORS TO BE TEMPERED



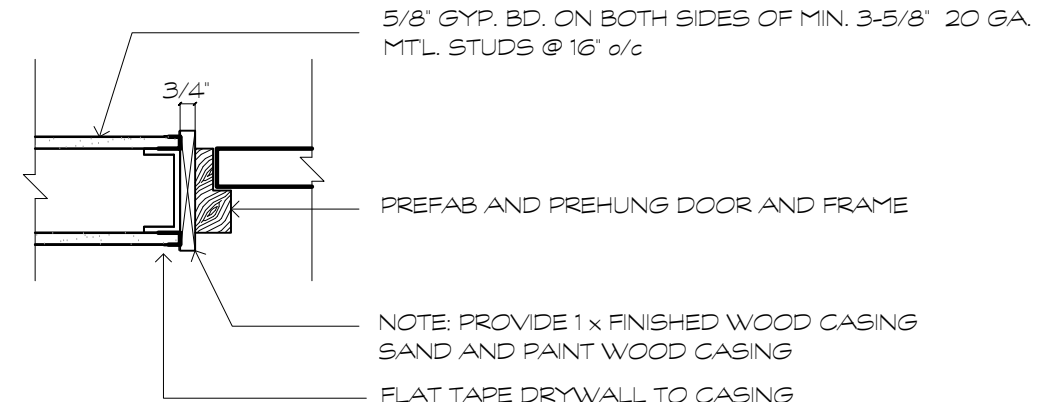
3 DETAIL (exterior door buck)
A-6 N.T.S.



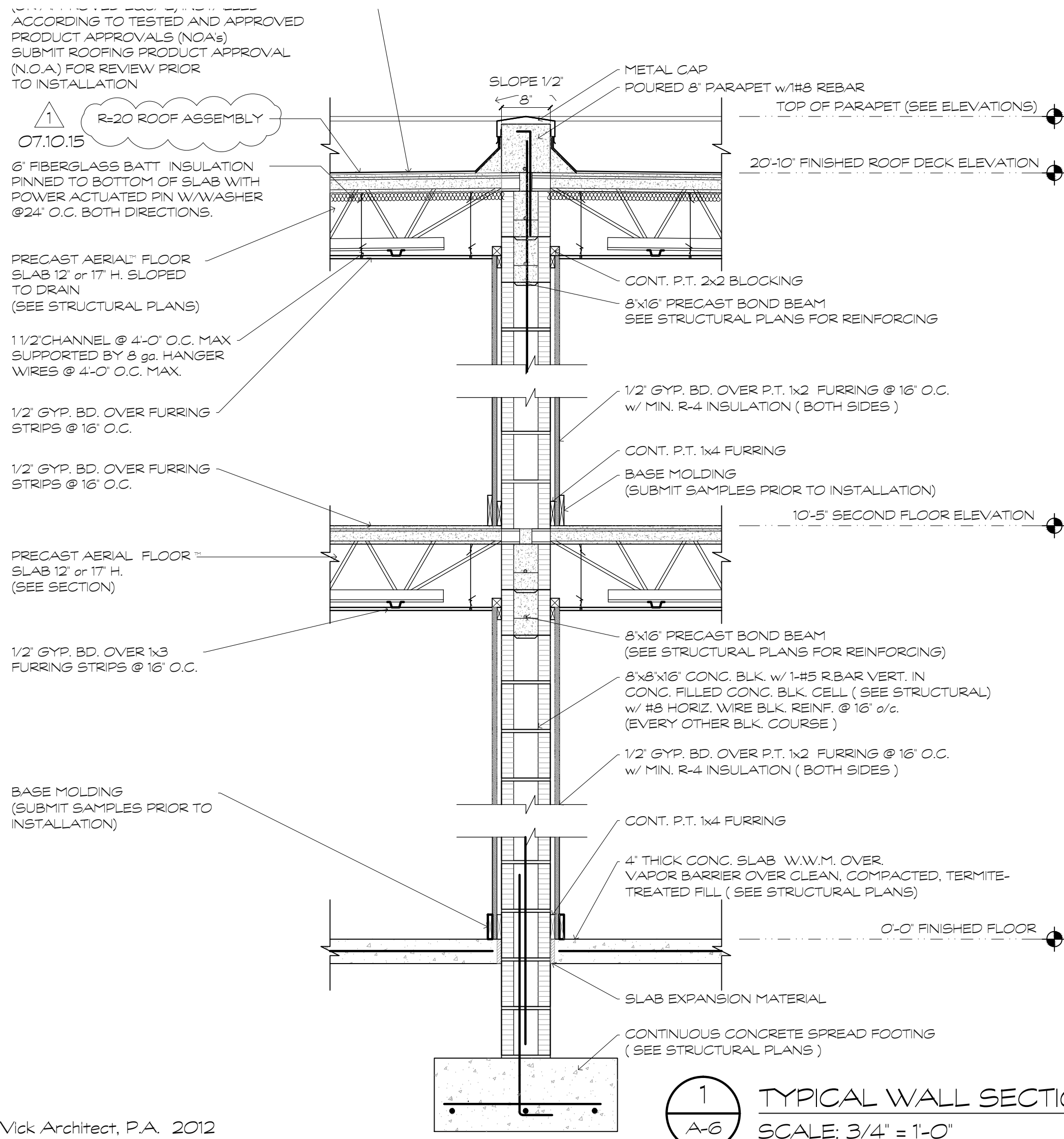
4 DETAIL (overhead door buck)
A-6 N.T.S.



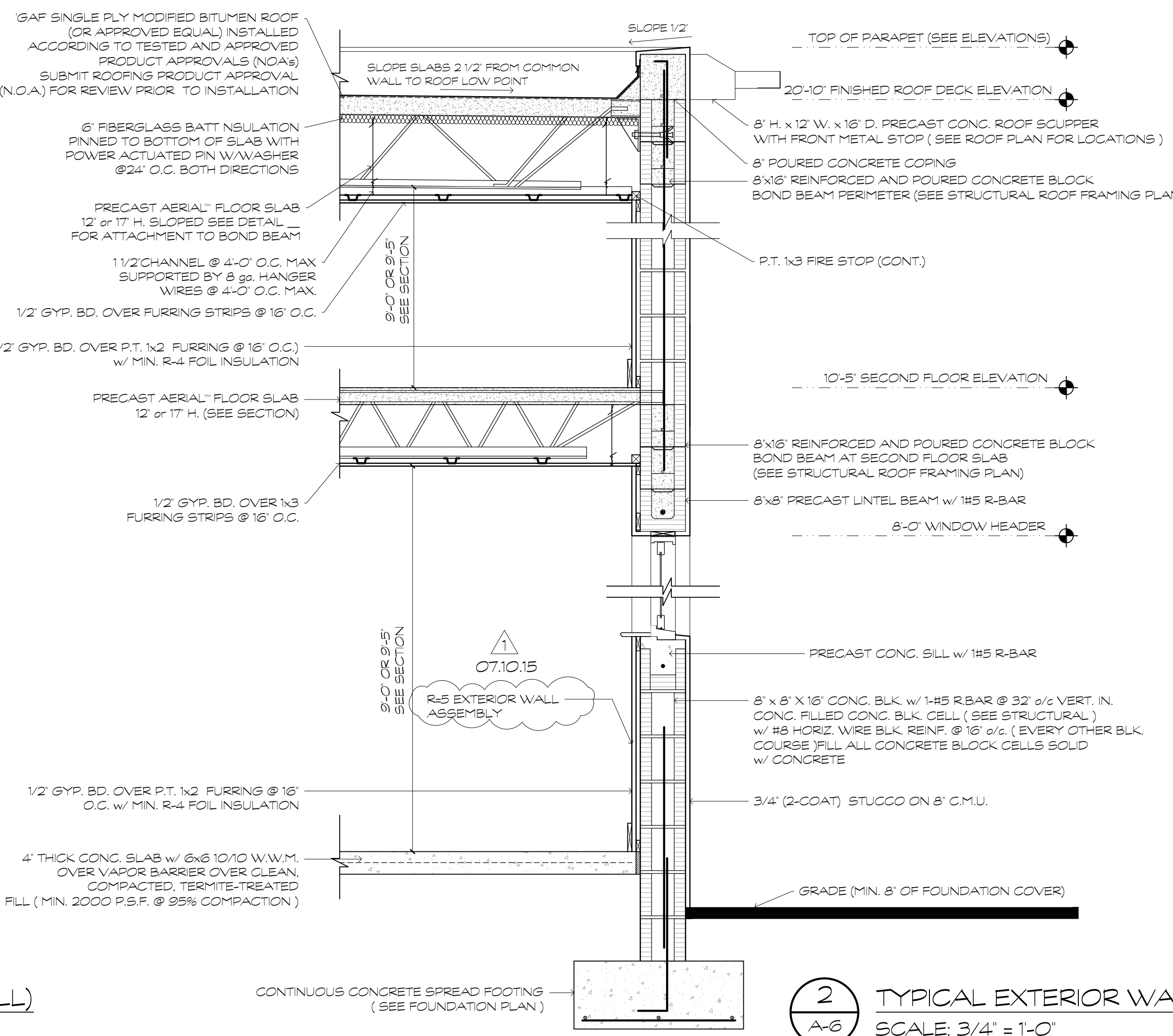
5 CMU WINDOW JAMB DETAIL
A-6 N.T.S.



6 DETAIL (interior door casing)
A-6 N.T.S.



1 TYPICAL WALL SECTION (INT. COMMON WALL)
A-6 SCALE: 3/4" = 1'-0"



2 TYPICAL EXTERIOR WALL SECTION
A-6 SCALE: 3/4" = 1'-0"

Robert Vick architect, p.a.
 architecture planning and design
 16 n.e. 4th street suite 240, fort Lauderdale, florida 33301 954-463-6340

ham Townhomes - 809 & 811
 809 & 811 NE 17th Way, Fort Lauderdale, FL

Designed By:	RV
Drawn By:	XEV
Date:	05.08.15
Job No.:	1420

NOTE: ALL DRYWALL SHALL BE PAINTED WITH (2) COATS OF HIGH QUALITY FLAT LATEX PAINT. ALL WOOD DOORS & TRIM SHALL BE PRIMED PRIOR TO RECEIVING (2) COATS OF HIGH QUALITY SEMI-GLOSS LATEX PAINT (SUBMIT PAINT SAMPLES FOR APPROVAL).
 NOTE: ALL EXTERIOR STUCCO SURFACES AND WOOD SHALL BE PRIMED AND SEALED PRIOR TO RECEIVING (2) COATS OF HIGH QUALITY EXTERIOR LATEX PAINTS. ALL EXTERIOR PAINTS SHALL RECEIVE MILDEW RETARDING PAINT ADDITIVE (SUBMIT PAINT SAMPLES FOR APPROVAL).