

3 RAINWATER SCUPPER DETAIL
A-3 N.T.S.

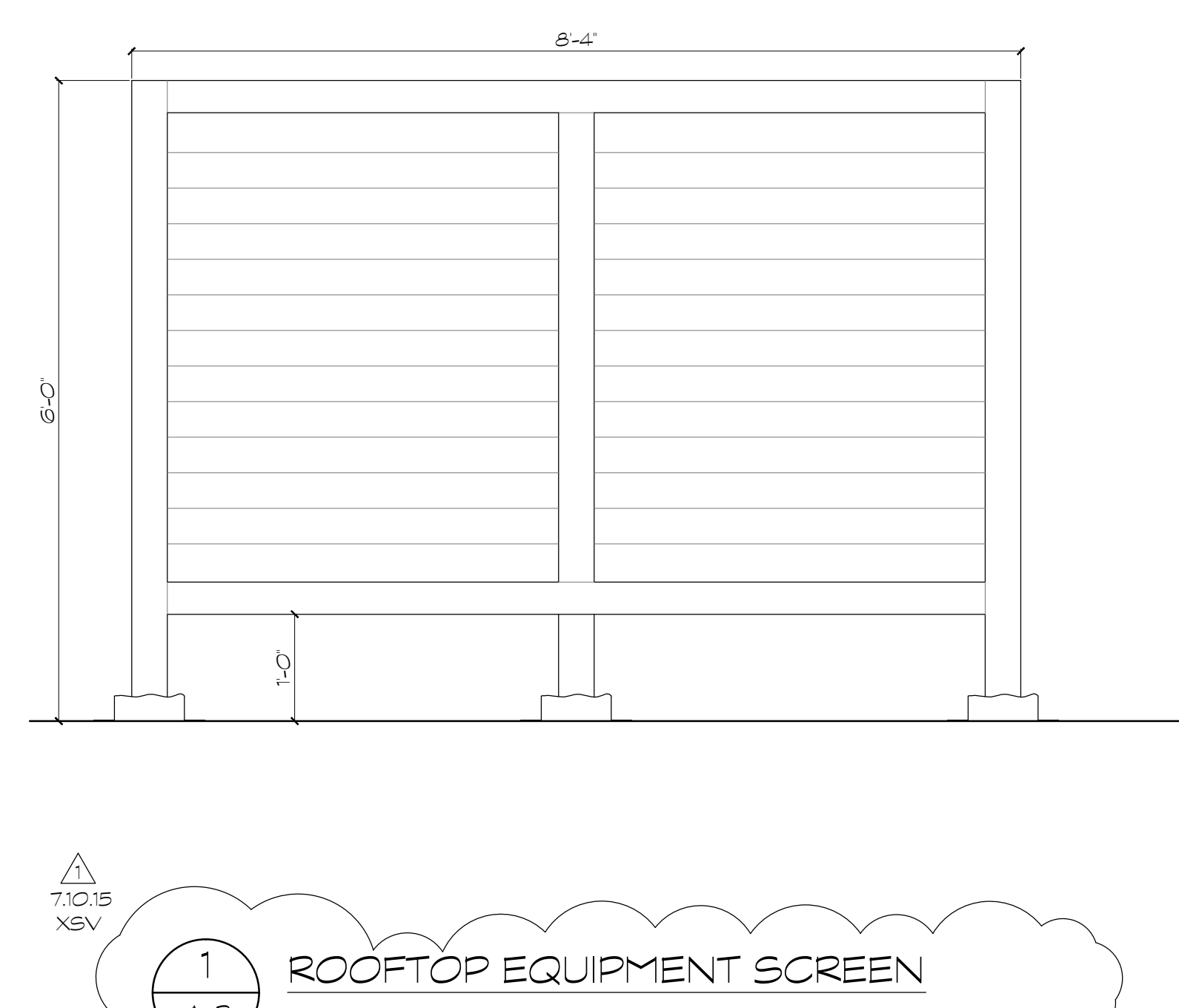
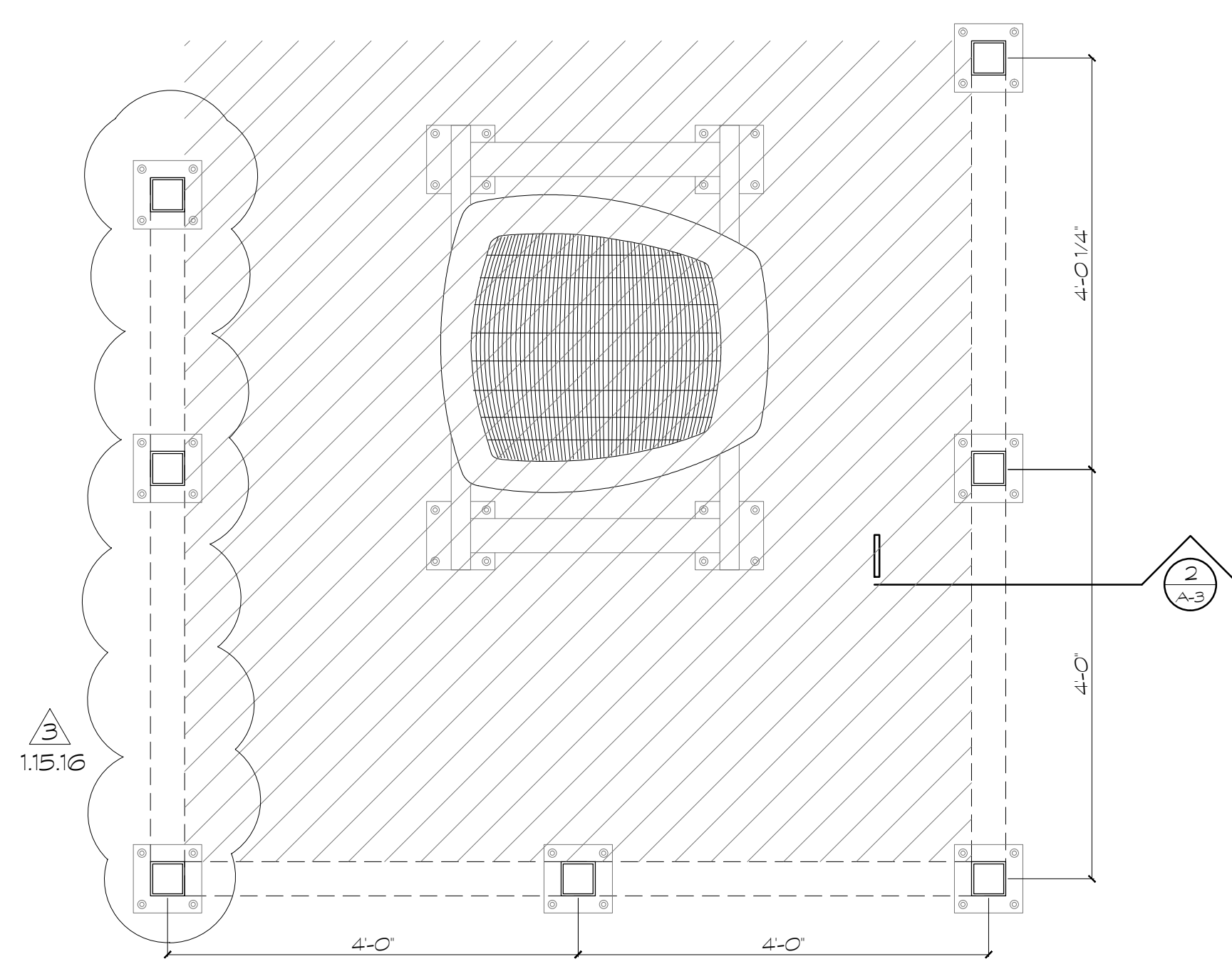
ROOF DRAINAGE CALCULATIONS

ROOF AREA
 HORIZONTAL ROOF AREA 1412 sq.ft.
 VERTICAL PARAPET AREA 186 x 0.5 / 2 47 sq.ft.
 Total 1459 sq.ft.

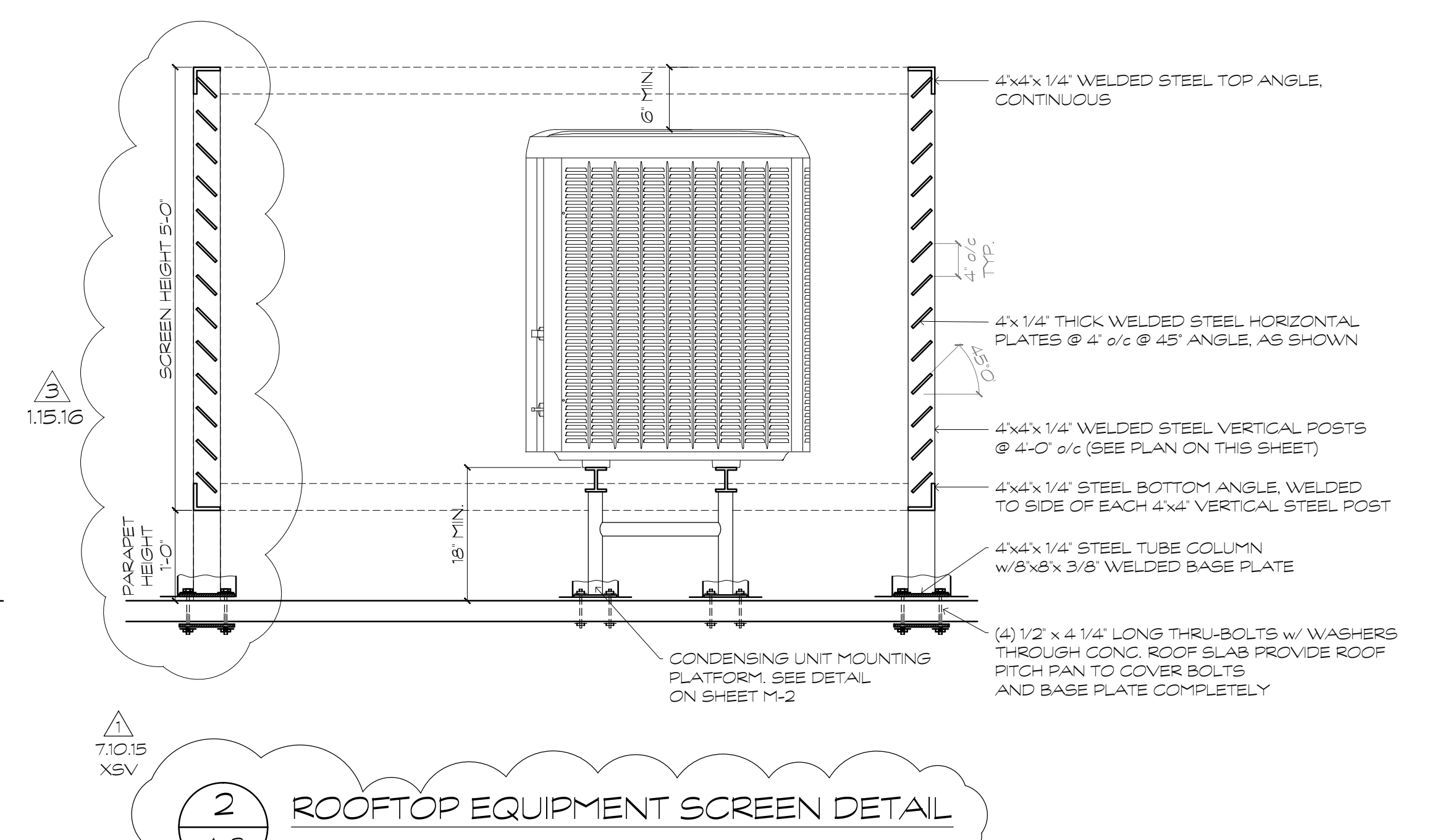
FBC / PLUMBING - TABLE 1107.7 (5" PER HR. RAINFALL RATE)
 EACH PRIMARY 4x8 SCUPPER HANDLES 3589 sq.ft.
 (4 PRIMARY DRAINS PROVIDED AT EACH ROOF AREA = 14356 sq.ft.)

PER FBC / PLUMBING SECTION 1107.3 SECONDARY (EMERGENCY OVERFLOW SCUPPER)
 SHALL BE EQUAL SIZE TO PRIMARY @ MAX. OF 4" ABOVE LOW ELEVATION OF ROOF DECK
 (2 SECONDARY DRAINS PROVIDED AT EACH ROOF AREA)

Roof Plan
Scale 1/4" = 1'-0"



1 ROOFTOP EQUIPMENT SCREEN
A-3 N.T.S.



2 ROOFTOP EQUIPMENT SCREEN DETAIL
A-3 N.T.S.

REVISIONS

7:10.15 XSV
8:28.15 XSV
1:15.16 XSV

Designed By: RV
Drawn By: XSV
Date: 05.08.15
Job No: 1420

A-3

AA# 2215