

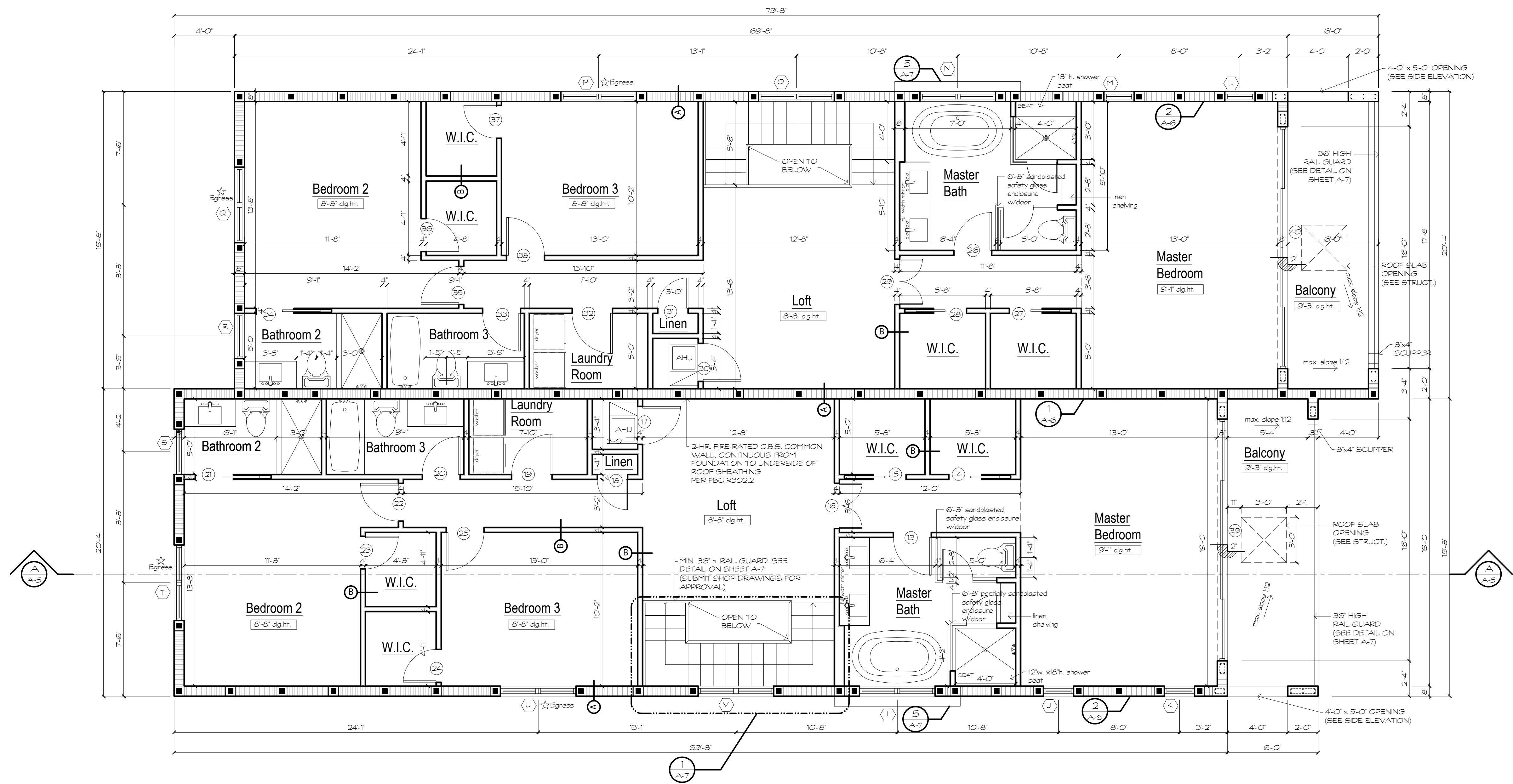
3-SET REVISIONS

1	7/10/15 XEV
---	-------------

Designed By:	RV
Drawn By:	XEV
Date:	05.08.15
Job No.:	1420

A-2
-----

AA # 22/15
------------



**WALL LEGEND**

- (A) 8" CONC. BLK. MASONRY WALL (SEE DETAIL #2 ON SHEET A-6)
- (B) 4" DRYWALLED PARTITION (SEE DETAIL #4 ON SHEET A-7)
- (C) 4" 1-HY. FIRE-RATED PARTITION (SEE DETAIL #6 ON SHEET A-7)

★ Egress  
 NOTE: INDICATES LOCATION OF EMERGENCY ESCAPE AND RESCUE OPENING PER F.B.C. / RESIDENTIAL SEC. R310 WITH A MIN. NET CLEAR OPENING OF 5.7 SQ. FT. AND A MIN. CLEAR WIDTH OF 20" AND A MIN. CLEAR HEIGHT OF 24" AND MAX. SILL OPENING HEIGHT OF 44".

THE ARCHITECT RECOMMENDS A PRECONSTRUCTION MEETING BETWEEN THE ARCHITECT, OWNER AND SELECTED CONTRACTOR TO DISCUSS CONSTRUCTION ITEMS AND ANSWER ANY QUESTIONS THAT MIGHT ARISE.

**Second Floor Plan**  
 Scale 1/4" = 1'-0"

**AREA CALCULATIONS**

FIRST FLOOR

CONDITIONED LIVING AREA.....	998 S.F.
GARAGE AREA.....	437 S.F.
ENCLOSED SQUARE FOOTAGE.....	1,435 S.F.

COVERED ENTRY..... 39 S.F.  
 SQUARE FOOTAGE UNDER ROOF..... 1,474 S.F.

SECOND FLOOR

CONDITIONED LIVING AREA.....	1312 S.F.
BALCONY.....	120 S.F.
TOTAL SQUARE FOOTAGE UNDER ROOF.....	1,432 S.F.

TOTALS

CONDITIONED LIVING AREA.....	2310 S.F.
------------------------------	-----------

ENCLOSED SQUARE FOOTAGE.....	2747 S.F.
BALCONIES/PORCHES.....	152 S.F.
TOTAL SQUARE FOOTAGE UNDER ROOF.....	2906 S.F.